



The COVID-19 GUIDE:

ADDITIONAL RESOURCES

Additional Resources

[USGBC COVID Resources Main Page](#): Links to all Safety First Pilot Credits, Best Practices, Facilities Management & Operations, resources for workers exposed to COVID-19, and other support services.

[Healthy People in Healthy Places Equals a Healthy Economy](#): The strategy is guided by the idea that prioritizing the health of people, communities and the planet is the fastest way to rebuild a healthier, more sustainable economy.

[AIA Re-occupancy Assessment Tool](#): The goal of this assessment tool is to promote best practices that protect the health, safety, and welfare of the public while creating opportunities for businesses, schools, restaurants, and other non-essential facilities to provide services.

[AIA Risk Management Plan for Buildings](#): A seven-step risk management plan is available to assist architects and clients when re-occupying buildings during the COVID-19 pandemic.

[Guidance on Preparing Workplaces for COVID-19, OSHA Document 3990-03-2020](#): The guide focuses on the need for employers to implement engineering, administrative, and work practice controls and personal protective equipment, as well as considerations for doing so.



COVID-19 INTRODUCTION

'CO' stands for 'corona'
'VI' for 'virus'
'D' for disease



REDUCING THE IMPACT

Plans need to address:

- Exposure risks
- Sources of exposures
- Routes of transmission

SYMPTOMS OF CORONAVIRUS (COVID-19)

**Patients with COVID-19 have experienced
mild to severe respiratory illness.**

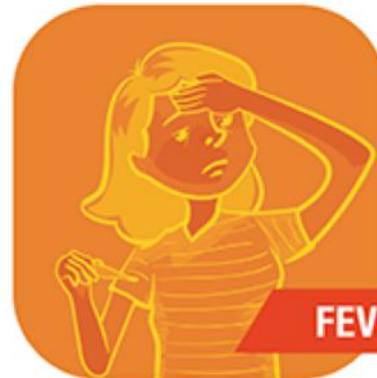
Symptoms can include:

If you have been in an area affected by COVID-19 or in close contact with someone with confirmed COVID-19 in the past two weeks and develop symptoms, call your doctor before going to a healthcare facility.

COUGH



FEVER



Symptoms may appear
2-14 days after exposure.

**SHORTNESS
OF BREATH**



CORONAVIRUS.DC.GOV



DC | HEALTH
GOVERNMENT OF THE DISTRICT OF COLUMBIA

WE ARE DC GOVERNMENT OF THE
DISTRICT OF COLUMBIA
MURIEL BOWSER, MAYOR

STOP THE SPREAD OF GERMS

Help prevent the spread of respiratory diseases like COVID-19.

**Stay at least 6 feet (about 2 arms' length)
from other people.**



cdc.gov/coronavirus

CS31917B May 12, 2020 4:01 PM

STOP THE SPREAD OF GERMS

Help prevent the spread of respiratory diseases like COVID-19.

**Do not touch
your eyes, nose,
and mouth.**



cdc.gov/coronavirus

CS-1917B May 12, 2020 4:01 PM

CORONAVIRUS DISEASE 2019

(COVID-19)

Your cloth face covering protects them.
Their cloth face covering protects you.

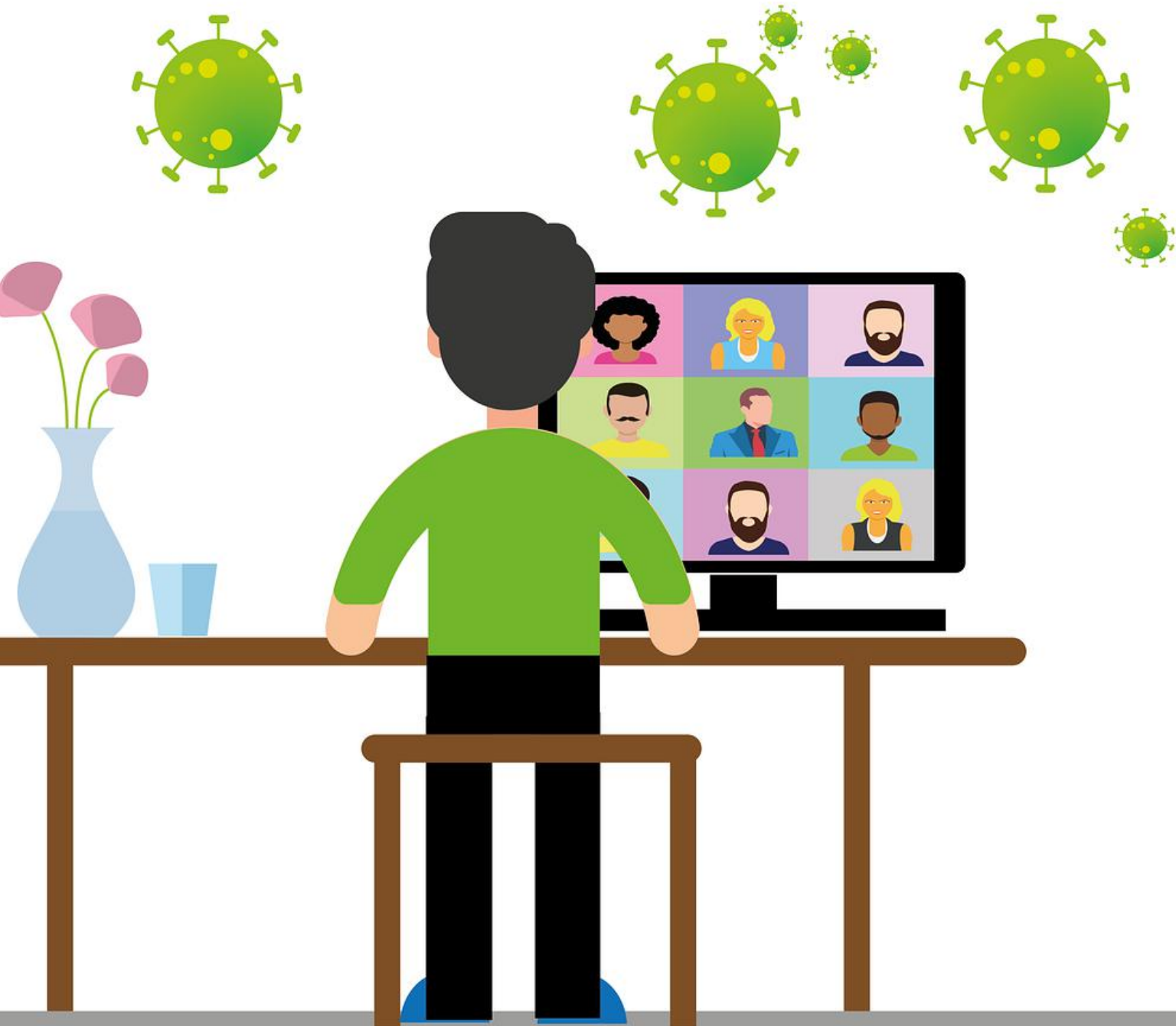


cdc.gov/coronavirus



BASIC INFECTION PREVENTION MEASURES

- Promote frequent hand-washing
- Sick workers to stay home
- Encourage respiratory etiquette



BASIC INFECTION PREVENTION MEASURES

- Provide tissues & trash cans
- Flexible worksites and hours
- Only use personal equipment
- Maintain housekeeping



WORKPLACE FLEXIBILITIES AND PROTECTIONS

- Encourage sick employees to stay home
- Flexible sick leave policies
- Educate companies and contract employees about policies
- Don't require a healthcare provider's note for employees
- Allow workers to care for sick family members at home



WORKPLACE FLEXIBILITIES AND PROTECTIONS

- Be aware of worker's concerns about pay, safety, health, and other issues that may arise during outbreaks
- Work with insurance companies and health agencies to provide employees with health information in the event of COVID-19 outbreak

Additional Resources



In this presentation, we explore how deadly diseases have impacted cities and affected urban planning. We discuss how urbanization contributes to pandemics and how diseases like the bubonic plague, Spanish influenza, and SARS changed how cities operate. Our team will review how hospitals, clinics, and other healthcare projects can decrease risks to patients and healthcare workers. Finally, we will examine how sustainable development may help decrease pandemic risks for future global catastrophes.

Pandemic: How Infectious Diseases Affect Cities and Urban Planning

1 GBCI General Hour for LEED Professionals

1 AIA HSW/LU CE Hour

Additional Resources



In this course we will identify COVID-19 challenges with respect to building occupancy, public health, and social equity. We will review LEED v4.1 BD+C Safety First Pilot Credits and discuss their possible impact on building occupant's health. Our team provides a deep-dive into the AIA Re-occupancy Assessment Tool and how design professionals can prioritize the health of building occupants. Finally, our team discusses how LEED can help stimulate the economy and bring about a healthier standard of living for all.

Combatting COVID-19: How LEED Safety First Pilot Credits Can Help Manage Buildings

1 GBCI LEED Specific BD+C

1 AIA HSW/LU CE Hour